

SPEC SHEET + MEASUREMENTS

SPORT-TEK

Sport-Tek® PosiCharge® Competitor™ Hooded Pullover. ST358

Product photo



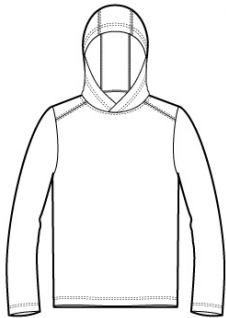
This lightweight hooded pullover locks in color and wicks moisture. It's versatile enough for year-round wear.

- 3.8-ounce, 100% polyester interlock with PosiCharge technology
- Removable tag for comfort and relabeling
- Three-panel hood
- Set-in sleeves
- Open cuffs and hem

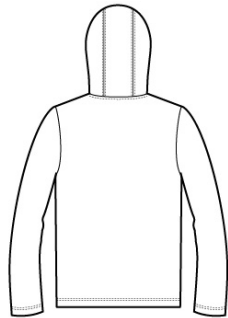
CARE INSTRUCTIONS

Machine wash cold with like colors. Only non-chlorine bleach. When needed tumble dry low, remove promptly. Cool iron if needed. Do not use softener. Do not dry clean.

Sketches



front



back

SPEC SHEET + MEASUREMENTS

SPORT-TEK

Sport-Tek® PosiCharge® Competitor™ Hooded Pullover.
ST358

PRODUCT MEASUREMENTS

| | XS | S | M | L | XL | 2XL | 3XL | 4XL |
|----------------------|--------|----|--------|--------|--------|-----|--------|--------|
| Body Length at Front | 27 | 28 | 29 | 30 | 31 | 32 | 32 1/2 | 33 |
| Chest | 18 1/2 | 20 | 21 1/2 | 23 | 24 1/2 | 26 | 28 | 30 |
| Sleeve Length | 34 1/4 | 35 | 35 3/4 | 36 1/2 | 37 1/4 | 38 | 38 3/4 | 39 1/2 |

Body Length at Front: Measure from high point shoulder to lowest point of hem at front.

Chest: Measured across the chest one inch below armhole when laid flat.

Sleeve Length: Start at center of neck and measure down shoulder, down sleeve to hem.

SIZE CHARTS

| | XS | S | M | L | XL | 2XL | 3XL | 4XL |
|-------|-------|-------|-------|-------|-------|-------|-------|-------|
| Chest | 32-34 | 35-37 | 38-40 | 41-43 | 44-46 | 47-49 | 50-53 | 54-57 |

HOW TO MEASURE



CHEST

Measure under the arm and around the fullest part of the chest with arms down, keeping tape horizontal.

SPEC SHEET + MEASUREMENTS



Sport-Tek[®] PosiCharge[®] Competitor[™] Hooded Pullover.
ST358

COLORS



Black
PMS BLACK
C



Iron Grey
PMS 7540C



Silver
PMS 429C



True Navy
PMS 533C



True Red
PMS 200C



True Royal
PMS 7687C