

SPEC SHEET + MEASUREMENTS

SPORT-TEK

Sport-Tek® Lightweight French Terry Pullover Hoodie. ST272

Product photo



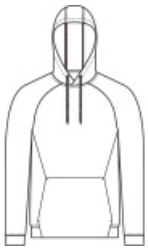
The casual ease of soft French terry in a versatile pullover.

- 6.5-ounce, 59/41 combed ring spun cotton/poly French terry
- Tag-free label
- Three-panel hood
- Dyed-to-match elastic drawcords with black plastic tips
- Integrated front pouch pocket

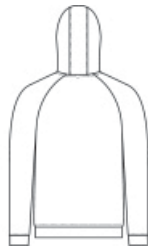
CARE INSTRUCTIONS

Machine wash cold with like colors, only non-chlorine bleach if needed. Tumble dry low, cool iron if necessary.

Sketches



front



back

SPEC SHEET + MEASUREMENTS

SPORT-TEK

Sport-Tek® Lightweight French Terry Pullover Hoodie.
ST272

PRODUCT MEASUREMENTS

	XS	S	M	L	XL	2XL	3XL	4XL
Body Length at Back	26 1/2	27 1/2	28 1/2	29 1/2	30 1/2	31 1/2	32	32 1/2
Chest	19	20 1/2	22	23 1/2	25	26 1/2	28 1/2	30 1/2
Sleeve Length from Center Back	34 1/2	35 1/4	36	36 3/4	37 1/2	38 1/4	39	39 3/4

Body Length at Back: Measured from high point shoulder to finished hem at back.

Chest: Measured across the chest one inch below armhole when laid flat.

Sleeve Length from Center Back: Measure from Center Back neck to shoulder point to sleeve hem.

SIZE CHARTS

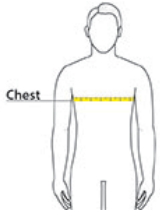
	XS	S	M	L	XL	2XL	3XL	4XL
Chest	32-34	35-37	38-40	41-43	44-46	47-49	50-53	54-57

SPEC SHEET + MEASUREMENTS

SPORT-TEK

Sport-Tek® Lightweight French Terry Pullover Hoodie.
ST272

HOW TO MEASURE



CHEST

Measure under the arm and around the fullest part of the chest with arms down, keeping tape horizontal.

COLORS



Black
PMS BLACK
C



Forest Green
Heather
PMS 3435C



Heather Black
PMS 426C



Heather Grey
PMS 428C



True Navy
PMS 533C



True Red
PMS 200C