

SPEC SHEET + MEASUREMENTS



Carhartt® Midweight Hooded Sweatshirt. CTK121

Product photo



Sometimes Mother Nature can't make up her mind. This sweatshirt works perfectly as a layer or by itself, allowing you to adapt with the weather.

- 10.5-ounce, 50/50 cotton/poly blend or 59/41 cotton/poly blend (Black, Carbon Heather, Moss, New Navy)*
- 50/50 cotton/poly blend (Brite Lime, Brite Orange)
- 70/30 cotton/poly blend (Heather Grey)
- Attached three-piece hood with drawcord closure
- Front hand warmer pocket
- Stretchable, spandex-reinforced, rib knit cuffs and waistband
- Carhartt-strong, triple-stitched main seams
- Carhartt label sewn on hand warmer pocket
- Loose fit

**Please note: Select colors in Carhartt fleece are currently transitioning from a 50/50 cotton/poly blend to a 59/41 cotton/poly blend. Weight and fabric properties remain the same. Your order may contain a combination of both fabrics.*

CARE INSTRUCTIONS

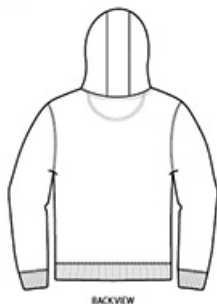
Machine wash cold like colors. Do not bleach. Tumble dry low.

Sketches



FRONT VIEW

front



BACK VIEW

back

SPEC SHEET + MEASUREMENTS



Carhartt® Midweight Hooded Sweatshirt. CTK121

PRODUCT MEASUREMENTS

	S	M	L	XL	2XL	3XL	4XL
Body Length at Back	28	29	29	30	30	31	31
Chest	22	24	26	28	30	32	34
Sleeve Length from Center Back	35 7/8	36 5/8	37 3/8	38 1/8	38 7/8	39 3/8	39 7/8

Body Length at Back: Measured from high point shoulder to finished hem at back.

Chest: Measured across the chest one inch below armhole when laid flat.

Sleeve Length from Center Back: Measure from Center Back neck to shoulder point to sleeve hem.

SIZE CHARTS

	S	M	L	XL	2XL	3XL	4XL
Chest	34-36	38-40	42-44	46-48	50-52	54-56	58-60

SPEC SHEET + MEASUREMENTS



Carhartt® Midweight Hooded Sweatshirt. CTK121

HOW TO MEASURE



CHEST

Measure under the arm and around the fullest part of the chest with arms down, keeping tape horizontal.

COLORS



Black
PMS BLACK
C



Brite Lime



Brite Orange



Carbon
Heather
PMS 7540C



Heather Grey
PMS COOL
GREY 6C



Moss
PMS 7770C



New Navy
PMS 533C